

# THE GALADARI STAND



**KIA OVAL**  
EVENTS &  
ENTERTAINMENT

## SAT NAV: SE11 5TB

**VAUXHALL STATION** 

When leaving the station walk through the tunnel towards Kennington. Cross at the traffic lights and walk down Harleyford Road to your right. As you walk down the road you will see the Kia Oval on your left follow the ground around and you will see the Galadari Stand, continue walking to the reception with street access.

Tube: Victoria Line

National Rail: South Western Railway

Buses: 2, 36, 77, 87, 88, 156, 196, 185, 344, 360, 436

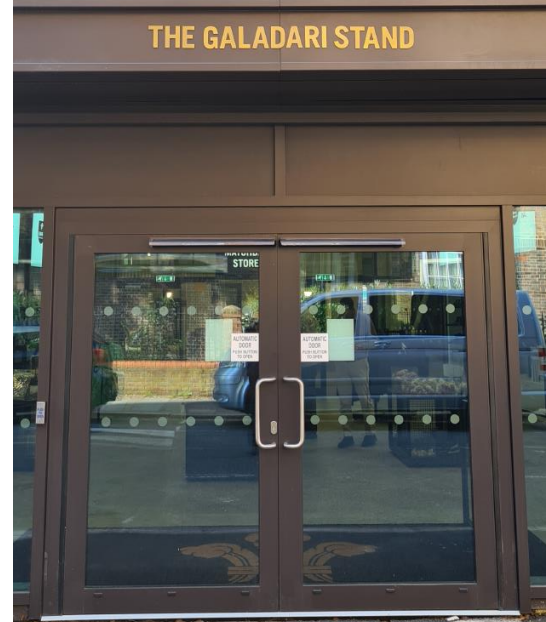
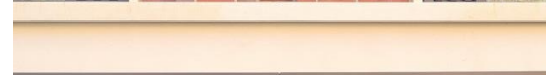
Santander Cycles

**OVAL STATION** 

Turn left out of the station and cross at the traffic lights. Continue walking left down Harleyford road and the Oval is on your right hand side. The Galadari Stand is the large building on the right of the Pavilion, walk around the Oval to the right and you will see the reception with street access.

Tube: Northern Line

Buses: 36, 155, 185, 333, 436



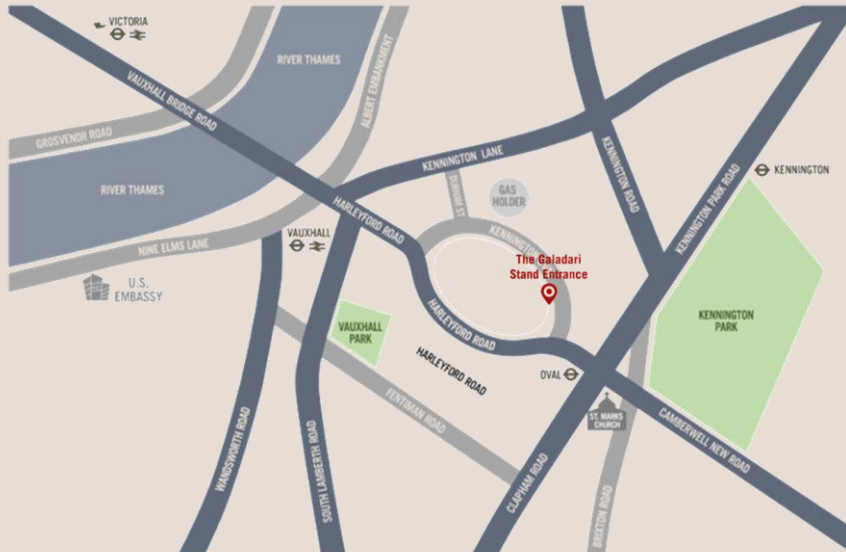
All prices are per person and exclude VAT

All dietary requirements must be provided at least 5 full working days prior to the event start date.

Please be aware we cannot guarantee trace-free food - if you require allergen information please contact a member of staff on the day.

# LOCATION

- Complimentary parking for organisers
- Outside the congestion Charge Zone
- On London's Super Cycle Highway
- Walking Distance from 4 underground stations
- Close to the Over ground station
- 10 minutes from Bank Underground



**OVAL**  
EVENTS &  
ENTERTAINMENT